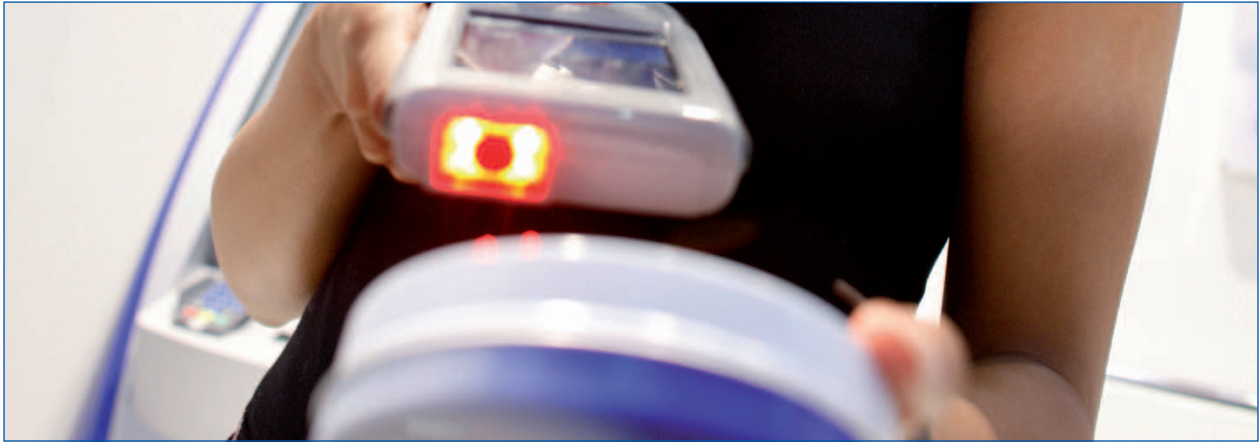


## Fast, Unerring, and Innovative

In developing the skeye.dart, we combined a user-friendly interface and an attractive design with state-of-the-art electronics and robust construction that guarantee a long service life. You will be impressed with the result: the skeye.dart is more than a simple scanner.





## SPECIFICATIONS

### Do you want to ...

- optimise time and cost related investments at your branch by introducing self-scanning technology?
- record data securely and quickly at all locations at all times?
- be able to access up-to-date information directly and at all times while on the road?

### The new skeye.dart provides the solution!

A strong feature of the skeye.dart is the straightforward user interface via function keys with selective key illumination, making the device easy to operate even for occasional users. The innovative system walks the user through the individual program steps: only those keys required for a particular program step are illuminated. For example, when a confirmation dialog is displayed, only the "Yes" and "No" keys are illuminated. Clear menu structures and simple shapes add to intuitive operation of the skeye.dart.

Whatever your requirements – the multi-talented skeye.dart is bound to be exactly what you need. Would you like to find out more?

<b>Hardware</b>	CPU Marvell PXA 320, 624 MHz
	128 MB DDRAM, up to 512 MB Flash
	3,5" VGA colour TFT with touchscreen
	Camera 2 MP autofocus, with barcode decoding function, camera flash light and aimer
	Wireless LAN IEEE 802.11 b/g
	Bluetooth 2.0
	Microphone, Receiver, Speaker
	2-colour LED indication
	Rugged case, protection level IP54, drop spec 1,2 m
	Two keyboard versions available (7 keys/11 keys)
Individually backlit keys for intuitive operation	
Rechargeable battery pack 2100 mAh (lockable)	
Dimensions: 145 mm x 78 mm x 25 mm	
Weight: 270 g (including battery)	
Operating temperature: -10 °C to + 50 °C	
USB 2.0 host port (Full Speed)	
USB 2.0 device port (Full Speed)	
RS232 port (TxD, RxD, RTS, CTS)	
Micro-SD card slot (lockable)	
DC-in connector	
Headset connector (audio in/out)	
<b>Options</b>	2D imager
	GPRS module
	SIM card slot (lockable)
	GPS-module
<b>Software</b>	Windows embedded CE 6.0
	Barcode decoding software
	SDK, APIs
	Backup tool SysBackup
<b>Accessories</b>	Docking station USB, Ethernet

 **Skeye** (Headquarters)  
 Rotenburger Str. 20  
 30659 Hannover  
 +49 511 6102-0  
 +49 511 6102-411 Fax  
 info@skeye.com  
 www.skeye.com

 **Skeye** Italy  
 Via Cavriana, 3  
 20134 Milan  
 +39 02 7391-218  
 +39 02 7391-256 Fax  
 info@skeye.com  
 www.skeye.com

 **Skeye** UK  
 Westmead Industrial Estate  
 Westlea, Swindon, SN5 7AD  
 +44 1793 647-942  
 +44 1793 647-822 Fax  
 info@skeye.com  
 www.skeye.com

 **Skeye** USA  
 12905 S.W. 129th Avenue  
 Miami, FL 33186  
 +1 305 909-0173  
 +1 305 596-7222 Fax  
 info@skeye-usa.com  
 www.skeye-usa.com